

Onwall

All weather loudspeaker
5" MMP®II driver, 4" ABR unit



Easy-to-fit high performance all-weather speaker

Introduction

Imbued with the performance, design innovation and build quality that have made Monitor Audio's speakers famous around the world, the Climate 10 loudspeaker has been created for all-weather environments, yet is a genuine hi-fi speaker worthy of the name.

Climate 10 – compact 2-way outdoor speaker with additional bass radiator. Designed to resist all weather conditions.

Technology Key:

C-CAM®

Ceramic-Coated Aluminium Magnesium (C-CAM®) is an innovative alloy that exhibits the ideal mechanical properties for use in high performance loudspeaker cones and diaphragms. It is extremely rigid, yet remains light enough to yield high overall efficiency.

MMP®II

Metal Matrix Polymer (MMP®) driver cones are made from a polymer loaded with metallic particles that provide rigidity and high overall efficiency. A high-pressure injection moulding process is used to achieve a different thickness at critical points in the cone geometry for better stiffness, consistency, and tighter production tolerances resulting in superior sonic performance.

ABR

Sound quality is optimised for the open environment through the use of an additional sealed ABR (Auxiliary Bass Radiator) to enrich low frequencies with extra punch and penetration.

Features Summary

- 1" C-CAM® gold dome tweeter
- 5" MMP®II bass/mid-range driver
- 4" ABR unit for superior low frequency performance in open environments
- Aluminium alloy grilles offer rust-free performance and longevity. They are non magnetic, lighter in weight
- Bracket assembly can be fixed horizontally or vertically using three screws. Once installed, the speaker can be rotated through a 180 degrees angle, allowing the flexibility to direct the sound for the maximum effect
- Solid, sealed ABS enclosure resists moisture and the effects of prolonged UV exposure
- Moulded into the rear casing are the terminals, incorporating chamfered sides for drainage
- Rubber terminal cover
- Typical applications: patio, poolside, sauna, yacht, airports, convention centres, hotels, live theatre/concert hall background, sports arenas

Climate 10



Frequency Response
80 Hz -6 dB (anechoic)

Impedance (nominal)
6 Ohms

Sensitivity (1W@1M)
88 dB

Amplifier Requirements (R.M.S)
10 - 60 W

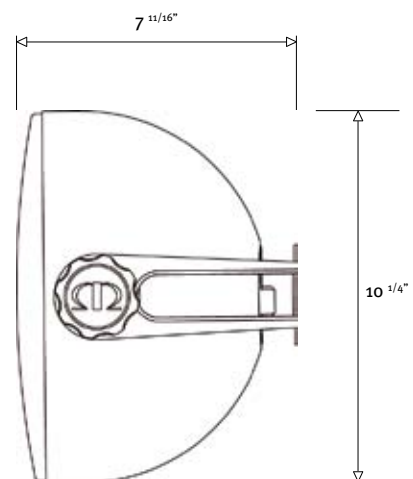
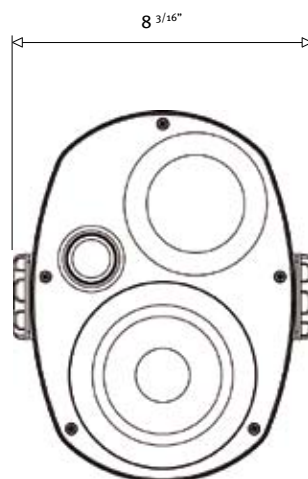
Power Handling (R.M.S)
60 W

Driver
1 x 5" MMP[®]II bass / mid-range driver
1 x 4" ABR unit
1 x 1" C-CAM[®] Gold dome tweeter

Dimensions
260 mm high x 208 mm wide x 196 mm depth
(10 1/4 inch x 8 3/16 inch x 7 11/16 inch)

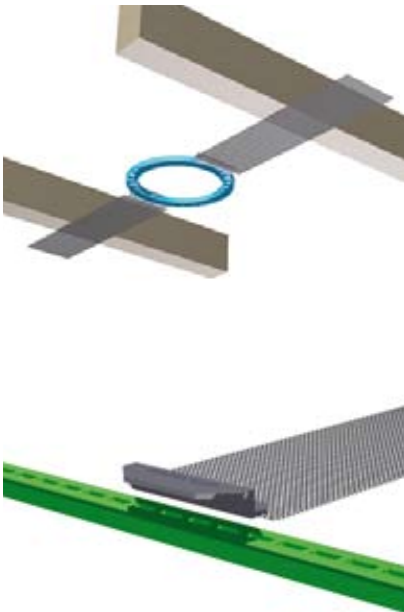
Weight Kg (lb)
2.3 Kg (5.1 lbs)

Dimensions



Installation accessories

Construction brackets



Introduction

Monitor Audio's colour-coded pre-construction brackets are designed with professional installers in mind. They will provide a quick and easy way of locating the desired position of Monitor Audio CI loudspeakers between joists/studs at the pre-construction stage. Easy-fix aluminium wings clip to the bracket holding the bracket in position for cutting when located on the studs.

Features Summary

- Colour coded brackets to differentiate models and assist selection
- Robust fixing clips (snap to fit securely in place but can be removed and repositioned)
- Moulded cable loop for associated wires, prior to install, snaps off when installed
- Easy fix aluminium mesh wings
- Multi-positional wing location in frame

Inceiling bracket - CB5" (Blue)

Fits the following models:

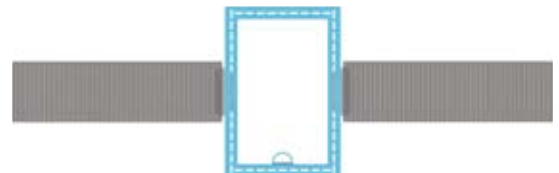
Pro-IC, CPC Radius & CPC Radius Stereo



Inwall bracket - WB5" (Blue)

Fits the following models:

CPW Radius



Inceiling bracket - CB6" (Purple)

Fits the following models:

C165, C165-T2, C265 & C265-LCR



Inceiling bracket - CB8" (Green)

Fits the following models:

C180, C180-T2, C280 & C280-LCR
CPC GS, CPC RS & CPC BR



Inwall bracket - WB8" (Green)

Fits the following models:

CPW GS, CPW RS & CPW BR

