

## AUDIOPHILE CPs MAKE GREAT SOUND DISCREET

### Monitor Audio targets luxury CI with the latest 'Controlled Performance' in-walls

Leading UK sound system innovator Monitor Audio has expanded its comprehensive and versatile architectural speaker range with two new flagship 'Controlled Performance' models. The new, luxury CP-IW260X and CP-IW460X in-wall speakers introduce the company's latest drive-unit technologies in compact three-way, five-driver configurations, built into closed-box designs to deliver the optimum combination of state-of-the-art audio performance and near-invisible installation. Behind their 'stealthy' trimless grilles the CP-IW260X and CP-IW460X follow a no-compromise engineering philosophy, which applies over forty years of award-winning speaker R&D to the challenge of developing the best sounding in-wall speakers available. Created for truly audiophile music and home theatre sound reproduction, the new models offer high efficiency and power handling for class-leading sound pressure levels, combined with the dynamic wide-band response, deep bass extension and low distortion usually expected of specialised floor-standing speakers.

The CP-IW260X and CP-IW460X feature Monitor Audio's signature C-CAM® (Ceramic-Coated Aluminium/Magnesium) cone material deployed in dual 6.5" bass drivers and twin 4" mids astride a tweeter in a symmetrical 'B-M-T-M-B' configuration.

### High Tech HF drivers

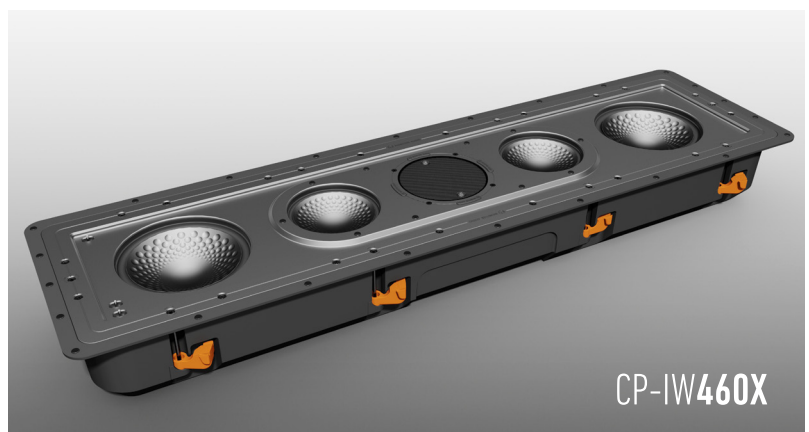
For the first time in a compact Monitor Audio in-wall speaker, the range-topping CP-IW460X employs a version of the high frequency ribbon transducer from the company's acclaimed Gold and flagship Platinum speaker lines. Being ultra-light and with no break-up, the ribbon displays extraordinary detail retrieval across a wide and linear response, which extends beyond 50 KHz to reproduce perhaps the most neutral and natural high frequency performance available from any in-wall speaker design. The ribbon can be rotated to accommodate horizontal and vertical installation.

The CP-IW260X uses the latest generation 1" Gold Dome tweeter, which employs a specially vented housing to reduce air pressure behind the dome for lower resonance, optimum damping and greater accuracy over a wider range.

### 'Dished' Cone Bass and Mids

Further down the spectrum, bass and mid frequency fidelity from both the CP-IW260X and CP-IW460X is preserved by Monitor Audio's latest 'dished' cone drivers. Devoid of the conventional centre pole-piece aperture, their radiating surfaces are formed from a continuous sheet of C-CAM, which contributes superior rigidity at the centre of the cone. In concert with large motors, underhung voice coils and die-cast alloy chassis, the dished cone structure delivers exceptionally low distortion and efficiency for deep, clean, dynamic bass and a wonderfully open and expressive midrange. Even within the confines of a compact in-wall design, the mid drivers operate within dedicated enclosures in order to optimise performance.

Complementing the response of its ribbon tweeter, the bass/mid drivers on the CP-IW460X are enhanced by Monitor Audio's RST® 'dimpled' cone technology, which uses concentric dimples to further strengthen their radiating surfaces, and the entire five-driver configuration is installed within a rigid die-cast metal baffle for ever more accurate and dynamic audio reproduction.



## Advanced crossovers deliver bi-wire flexibility

The new CP designs use a sophisticated twenty-three element crossover, comprising low loss inductors and high grade Polypropylene capacitors. Separate bi-wire terminations for the bass/mid and tweeter networks offer a superior level of system design flexibility for high-end custom installation, and serve to demonstrate the audiophile design ambition underpinning the new models.

## Back boxes guarantee great sound

In common with their CP series range-mates, the CP-IW260X and CP-IW460X are fitted with acoustically-sealed cast-polymer back boxes to provide the structural integrity needed to preserve their exceptional sound quality and to ensure a 'controlled performance' wherever they're installed. Not only do the enclosures protect the systems from dirt and dust, they also limit the transmission of sound between walls and floors, reducing the need for sound isolation in the wall cavity.

To complete the unity of advanced acoustic and aesthetic design with ease of use, paintable trimless grilles are attached with powerful rare earth magnets for easy access, and both CP-IW260X and CP-IW460X offer HF and midrange attenuation, together with boundary compensation switching to fine-tune in-room response. Monitor Audio's patented ten-position 'tri-grip'® mounting system provides easy and secure installation within standard 4" stud wall bays.

Demonstrating remarkable engineering flair and innovation, Monitor Audio has concentrated the technologies of its most celebrated hi-fi speakers within a brace of new in-wall designs. Competing with the finest conventional speakers for sound quality from stealthy in-wall locations, the compact CP-IW260X and CP-IW460X will deliver an outstanding level of audio performance to the luxury CI market.

## Features at a glance

### CP-IW260X:

- Dual 4" C-CAM® mid-range drivers – featuring underhung voice coil
- 25mm (1") C-CAM Gold Dome tweeter
- Portrait or landscape orientation.

### CP-IW460X:

- Dual 6.5" C-CAM bass drivers featuring RST® 'dimpled' cone technology
- Die-cast alloy bass driver chassis provides rigidity; results in punch bass and clean mid-range performance due to reduced transfer of vibrations
- Dual 4" C-CAM mid-range drivers featuring RST 'dimpled' cone and underhung voice coil technologies
- C-CAM Ribbon High Frequency transducer
- Innovative HF rotating system to facilitate portrait or landscape orientation.

### BOTH:

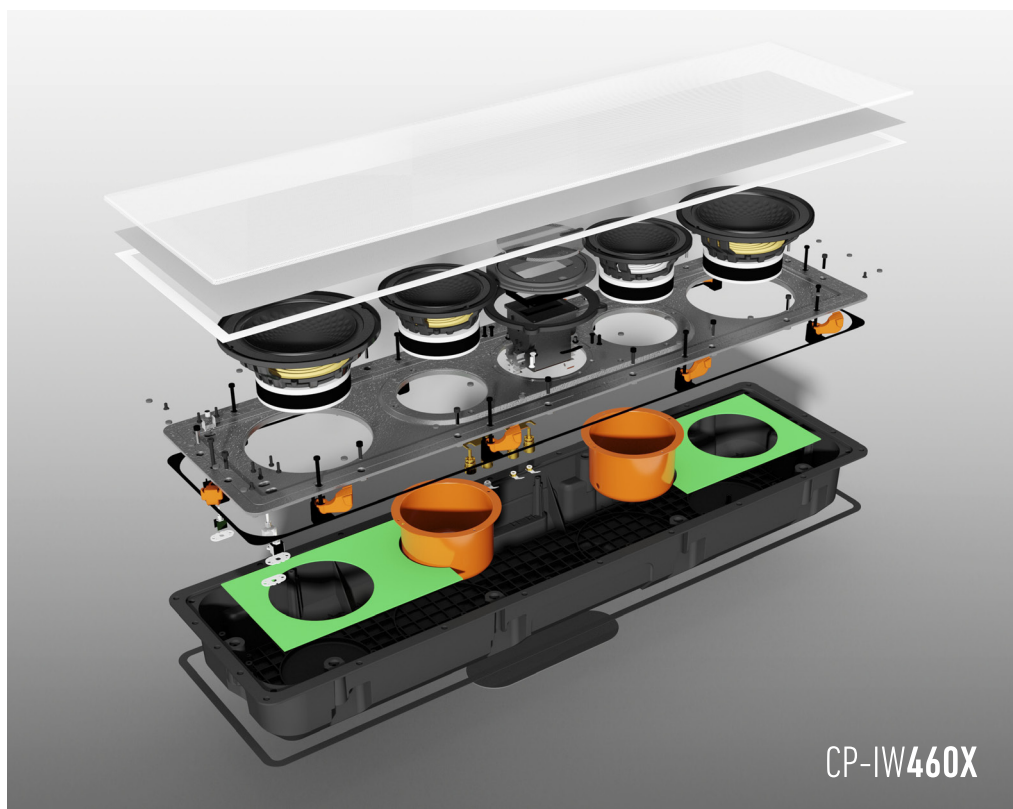
- Integrated back-box to provide rear sound isolation resulting in 'controlled performance'
- Cast Polymer enclosure – designed to provide high degree of rigidity and acoustic damping properties
- High overall efficiency and maximum SPL for powerful home theatre installations
- High power handling
- Three-way design in a symmetrical 'B-M-T-M-B' configuration
- High-end crossover design – featuring low loss inductors and audiophile grade Polypropylene capacitors
- Patented Tri-Grip® fixing system is easier to install than conventional clamping systems providing three times the surface area and improved sealing
- Trim-less, low profile magnetic grilles provide attractive, discreet visual aspect and easy installation and servicing
- Paintable grille to blend with the living environment
- High quality bi-wire terminal connections – provide increase in performance particularly when a bi-amplifier configuration is specified.

## Specifications

	CP-IW260X	CP-IW460X
Frequency Response	50Hz – 60kHz (–6dB. Typical in room response)	50Hz – 30kHz (–6dB. Typical in room response)
Impedence	6Ω Nominal (Min: 4.5Ω)	
Sensitivity	89dB (1W @ 1M)	
Maximum SPL	113.8dBA (@1M. Installed/in room)	
Power Handling (RMS)	150W	
Recommended Amp Requirements	60 – 150W	
Crossover Frequency	L.F – 500Hz @ 12dB/Octave M.F – 500Hz @ 12dB/Octave. 3KHz @ 18dB/Octave H.F – 3KHz @ 18dB/Octave	
Drive Unit Complement	2 x 6.5" C-CAM® Bass drivers 2 x 4" C-CAM Bass drivers 1 x 25mm (1") C-CAM Gold Dome tweeter	2 x 6.5" C-CAM Bass drivers with RST® cone technology 2 x 4" C-CAM Bass drivers with RST cone technology 1 x C-CAM High Frequency Ribbon transducer
System Configuration	3-way – 5 Driver – Sealed enclosure	
Adjustment Controls	Boundary Compensation (On/Off) MF Level: +1/0/–1 (dB) HF Level: +1/0/–1 (dB)	
Overall Dimensions	907 x 257 mm (35 <sup>3/4</sup> " x 10 <sup>1/8</sup> " )	
Overall Depth	102mm (4")	
Cut Out Dimensions	880 x 230 mm ( 34 <sup>21/32</sup> " x 9" )	
Mounting Depth	96mm (3 <sup>3/4</sup> " )	
Fixing Type	10 x Tri-Grip® Dog leg fixings	
Construction Material	Cast Polymer enclosure (RoHS2 Compliant)	Cast Polymer enclosure with die-cast Aluminium baffle (RoHS2 Compliant)

### Availability: TBC

Monitor Audio Ltd  
24 Brook Road,  
Rayleigh, Essex,  
SS6 7XJ England  
T. + 44 (0)1268 740580  
F. + 44 (0)1268 740589  
E. info@monitoraudio.co.uk



CP-IW460X